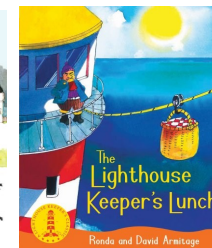
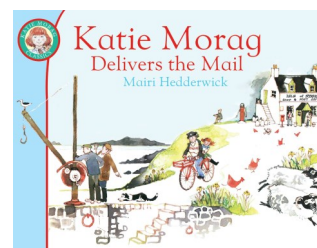
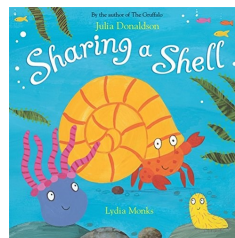
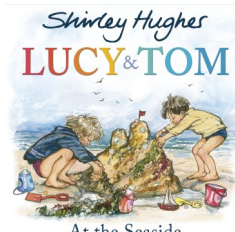
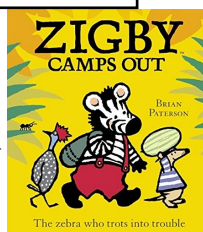


Autumn Term English Map Year 1—On Safari (Transition) and Island Life -2021-22

Class Texts



The Merton Primary School
To be the best we can be.



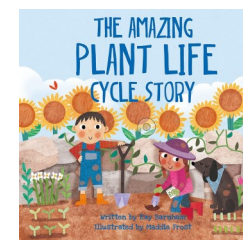
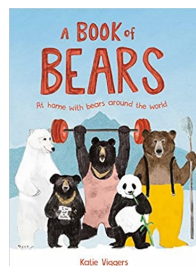
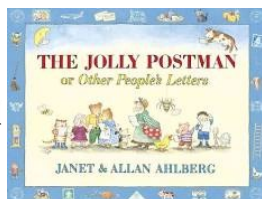
	1	2	3	4	5	6	7	8	9	10	11	12	13	14	15	
Key Texts	Zigby	Zigby	Lucy and Tom	Sharing a shell	Katie Morag	The Isle of Coll	The Lighthouse Keepers Lunch Somebody Swallowed Stanley or Alba the 100 year old fish (just thinking Year 2s..)						Grace Darling			
Reading	Key stories phonic knowledge	Assessment Retelling stories Apply phonic knowledge	Title, events, characteristics Apply phonic knowledge	Read and retrieve Apply phonic knowledge	To read words containing taught GPC's and –s, -es, - ing, endings	Develop understanding by listening to and reading non fiction text	To use ‘chunking’ to read longer words / reading compound words To read words containing taught GPC’s and –s, -es, -ing, endings To read words with contractions						Appreciate poems, and to recite some by heart- linking word meanings			
Writing	Words and captions		Retell	T4W imitation	Character description	Fact file/Tourist leaflet	T4W– cold write/retell/ innovate			T4W-Independent /hot write			T4W learn and create poems			
VPG	Space between words		Capital letters to start sentences	Capital letters Full stops	Exclamation marks	Question marks	Capital letters Full stops			Capital letters for proper nouns. Joining words and clauses			Revisit Y1 punctuation			
Spoken language	Listen and respond appropriately to adults and peers			Ask relevant questions		Collaborative conversations	Role play / Drama—T4W			Freeze Frame—T4W			Performance poetry Christmas Performance			
Phonics/ Spelling	*Assessment		Most children will... Recap Phase 3	Recap Phase 3	Phase 4	Phase 4	Phase 4			Phase 5a			Phase 5a			
* see Phonics recovery for enhanced phonics program 2020-21																
							Fiction		Non– Fiction		Poetry		Assessment		Cross curricular	

Spring Term English Map Year 1— Once Upon A Time –2021-22

Class Texts



The Merton Primary School
To be the best we can be.



	1	2	3	4	5	6	7	8	9	10	12
Key	The Jolly Postman	The Jolly Postman	The Three Little Pigs	The Three Little Pigs	Bears	Hansel and Gretel	The Jack and the Beanstalk (nc castles)			Plants	
Reading	Be familiar with key characteristics	Make simple Inferences	Read words ending in ed (huffed and puffed)	Read contractions (I'll)	Features of non fiction text	Explain understanding of texts	predict	Retell orally and comment on specific features	Read words with – s, -es, -ing, endings	Features on non fiction	
Writing	Captions Letter writing		T4W Retell	T4W Retell	Riddles	Instruction writing	Imitate	Innovate (Castle Description)	Independent	Information poster	Cold write
VPG	Capital letters for names		Capital letter/ full stop/ question mark	Capital letter/ full stop/ question mark	Question marks	using a capital letter for names of people ,and places	Adjectives Using a comma personal pronoun 'I'			Join using 'and'	
Spoken language	Discuss significance to title / events				Recite poems by heart	Discuss practical problems (measures– maths)	Orally compose sentences				
Phonics/ Spelling	Most children will... Recap phase 4/5a		5a	5a Spell days of the week	5a	Begin 5b using –er and –est where no change is	5b using the spelling rule for adding –s / es			5b using the prefix un	

* Gaps in coverage that need revisiting in Summer due to lockdown

Fiction

Non– Fiction

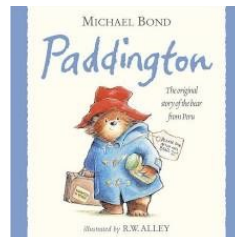
Poetry

Assessment

Cross curricular

Summer Term English Map Year 1—Paddington -2021-22(tweaked in response to lockdown)

Class Texts



	1	2	3	4	5	6	7	8	9	10	11	12
Key Texts	Paddington the original Bear from Peru and WWF information		The buildings that made London (We completely must go to London)			Paddington’s guide to London		All aboard the London Bus (poetry)		Paddington and the Grand Tour / Paddington King of the Castle?		
Reading	Read contractions Read words with –s, -es, -ing, endings		Read words containing taught GPC’s and -er and –est			Retell orally and comment on specific features		Making simple inferences		Predictions Read and retrieve		
Writing	WWF Adopt a bear!	Care instructions for a Bear!	Fact files Label buildings– short burst information text			Tourist guide/ Information text		London Poem	T4W sequence			
VPG	using a capital letter for the personal pronoun ‘I’ Use of a comma adjectives		Sub headings	Capital letter/ full stop/ question mark	Comma/ join using and	Capital letter/full stop/ question mark		Joining words and joining clauses using and Beginning to punctuate sentences using a capital letter and a full stop, question mark or exclamation mark				
Spoken language	Debate– wildlife Collaborative conversations		Say sentences out loud/ orally edit					Learn and perform poetry				
Phonics/ Spelling	Most children will... Phase 5 Recap split digraphs		Phase 5 using –er and –est where no change is needed reset groups 3/5a/ begin 5b			Phase 5b Spelling rules (s/es/ing/ed		Phonics 5b/c Spelling rules (s/es/ing/ed		Phonics 5c		

* Additional coverage—lockdown. Inc more short burst writing for stamina/ secure sentence construction, also see identified covid recovery catch up groups—phonics and writing

Fiction

Non– Fiction

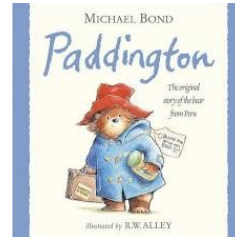
Poetry

Assessment

Cross curricular

Summer Term English Map Year 1—Paddington -2021-22

Class Texts



	1	2	3	4	5	6	7	8	9	10	11	12
Key Texts	Paddington the original Bear from Peru and WWF information		The buildings that made London (We completely must go to London)			Paddington’s guide to London		All aboard the London Bus (poetry)		Paddington and the Grand Tour / Paddington King of the Castle?		
Reading	Read contractions Read words with –s, -es, -ing, endings		Read words containing taught GPC’s and -er and –est			Retell orally and comment on specific features		Making simple inferences		Predictions Read and retrieve		
Writing	WWF Adopt a bear!	Care instructions for a Bear!	Fact files Label buildings– short burst information text			Tourist guide/ Information text		London Poem	T4W sequence			
VPg	using a capital letter for the personal pronoun ‘I’		Sub headings	Capital letter/full stop/ question	Comma/ join using and	Capital letter/full stop/ question mark		Joining words and joining clauses using and Beginning to punctuate sentences using a capital letter and a full stop, question mark or exclamation mark				
Spoken language	Debate– wildlife Collaborative conversations		Say sentences out loud/ orally edit					Learn and perform poetry				
Phonics/ Spelling	Most children will... Recap phase 3/5a		Recap phase 3/5a using –er and –est where no change is needed			Phonics 5a? After screen straight to 5b?		Phonics 5b		Phonics 5c		

Fiction

Non– Fiction

Poetry

Assessment

Cross curricular